

Sustainability Trust

Annual snapshot
2015–2016



About us

Sustainability Trust is a social enterprise that works alongside Wellingtonians to reduce the city's carbon footprint.

We provide impartial advice on energy efficiency solutions for homes and businesses, and supply and install the best products on the market.

We use the money from this business to fund community programmes such as Wellington Curtain Bank and EcoEducation.

We're based at our central city EcoCentre, which is fitted with 80 percent recycled or repurposed materials, and used to display energy-efficient technology, for EcoEducation programmes, is a home for our EcoShop and, after-hours, is a community venue for hire.

Our vision

An environmentally, socially, economically, and culturally sustainable Wellington Region.

Our values

- Social equity
- Sustainability
- Partnership
- Accountability



The Sustainability Trust team

Our work



Smart Homes

We help people find energy efficient solutions for their homes and businesses. We offer independent advice and then supply and install the best insulation, heating, ventilation and solar power products.



Education

We work with businesses, schools and community groups to provide practical ways to live and work more sustainably. We provide workshops, waste audits, advice and resources.



e-Waste

We are Wellington's central drop-off point for electronic waste, batteries and eco-bulbs. We work with partners to recycle and dispose of the waste responsibly.



EcoShop

We sell gifts, DIY and home and living products that make sustainable living easy. Shop online or in-store at Forresters Lane.



Wellington Curtain Bank

We provide free, lined curtains for low-income families using upcycled donations from Wellington homes and businesses.



Warm Fuzzies

We give comprehensive support to people with serious health issues related to cold, damp housing through our Warm Fuzzies programme and as a partner in regional healthy housing programme Well Homes.

Hello and thank you!

Welcome to our Annual Report – a concise guide to our successes and challenges in the last financial year. It's been busy, with some major changes in the political and funding landscape, especially around rental properties and vulnerable households.

This includes a new law which requires all rental properties to be insulated by July 2019 – good news indeed! We are also very pleased to see our successful Well Homes initiative allocated Government funding, which will enable us and key partners assist the most vulnerable families in a comprehensive four-year programme.

With the signing of the Paris Agreement by New Zealand and other countries, climate change action is getting some much-needed attention. We are doing our bit and have installed a set of solar panels on the building and are building our education and waste minimisation activities.

Thank you to anyone who has been a part of supporting our growth and impact this year.

We invite you to take a good look through this report and engage with us if you could use any of our services or want to bounce some ideas around that will help us grow Wellington into the greenest little capital in the world.

Philip Squire, Chief Executive and Chris Howe, Board Chair



Wow!

This year's proudest moments

Chief executive Philip Squire was recognised for outstanding leadership – he was a finalist in Wellingtonian of the Year 2015 and was Commended in the EECA Awards 2016.

Development of a tool to audit the energy use of businesses – 63 Wellington businesses took up the opportunity in the first year.

Installation of 48 solar panels on the roof of Wellington Zoo, supporting them in their CarboNZero goals.



Robust discussions with Government ahead of the Residential Tenancies Amendment Act 2016, which influenced changes that got a better result for tenants and landlords.

We worked with Victoria University of Wellington to insulate 48 of their buildings and install 281 energy-efficient heaters, warming up 24,000 students and staff.

Becoming one of four partners in the regional, Ministry of Health-led Well Homes programme, which provides support to families experiencing health issues as a result of poor housing conditions and will complement the work we're already doing with our Warm Fuzzies programme.



A waste audit at Rimutaka Prison, discovering Upper Hutt's biggest village had an opportunity to divert 297 tonnes of waste to compost and 94 tonnes to recycling a year.

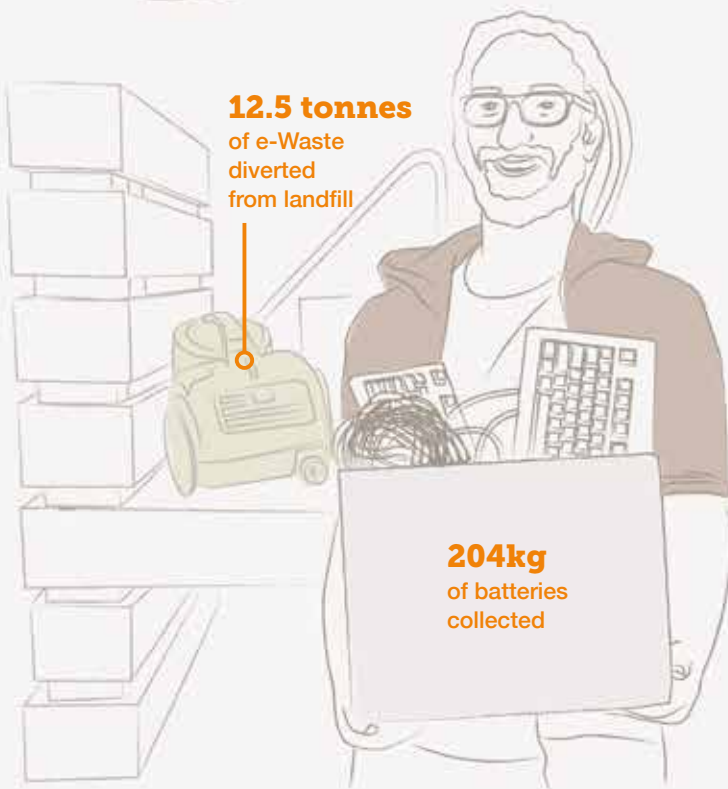
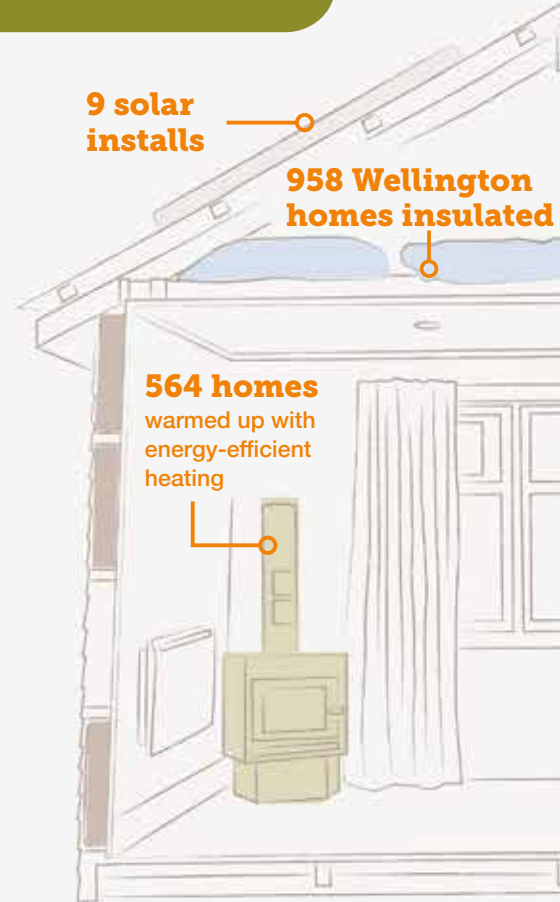
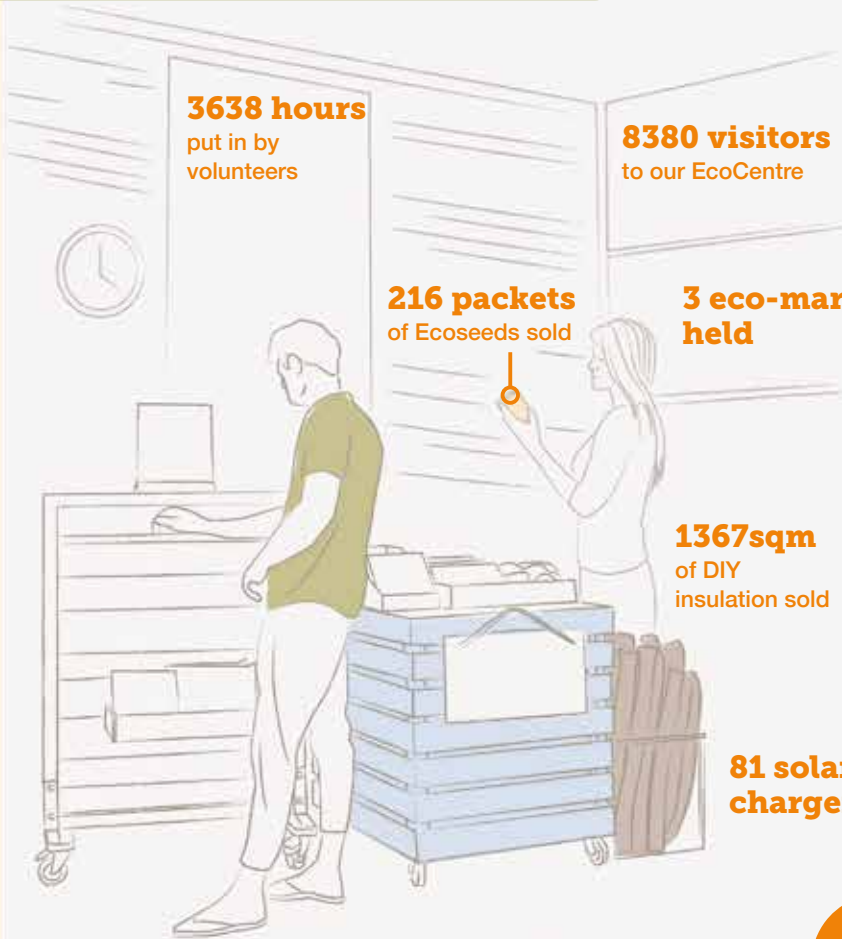


Financials at a glance

Year ending June 30, 2016



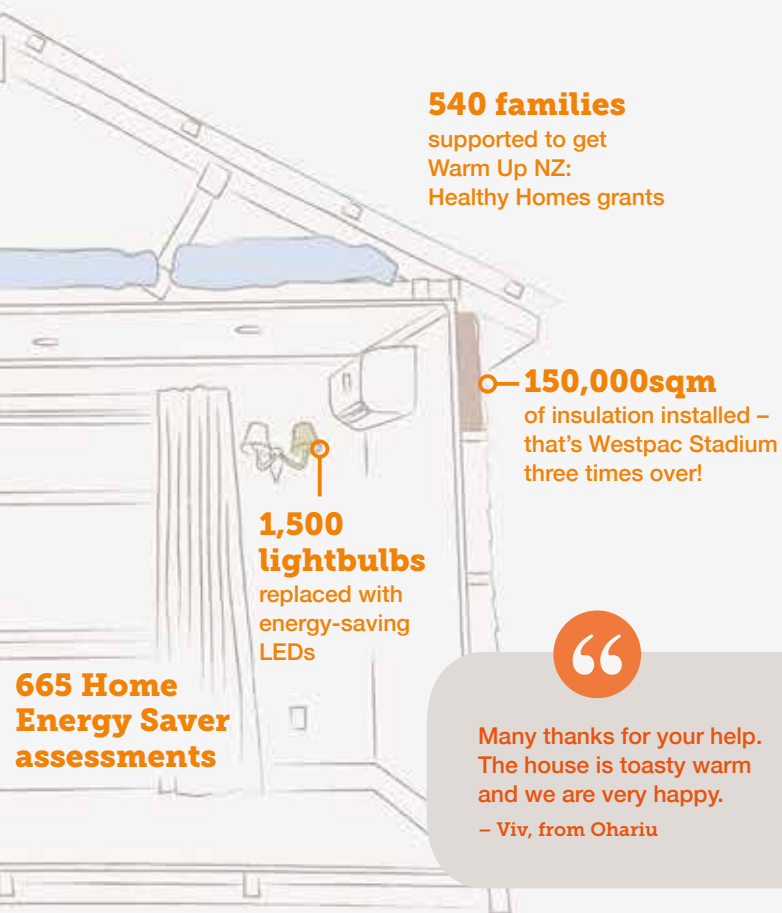
*A detailed copy of our audited financial statements, including lists of community grants and contract funding received, are available on our website at www.sustaintrust.org.nz/snapshot16



Top 3 e-Waste items:



“ Thank you again for the curtains. I am much warmer now – Will, Wellington



540 families supported to get Warm Up NZ: Healthy Homes grants

150,000sqm of insulation installed – that’s Westpac Stadium three times over!

1,500 lightbulbs replaced with energy-saving LEDs



Many thanks for your help. The house is toasty warm and we are very happy.
– Viv, from Ohariu

665 Home Energy Saver assessments

Sustainability Trust

ust.org.nz | 0508 78 78 24 | Forrester Lane (off Tory St), Wellington

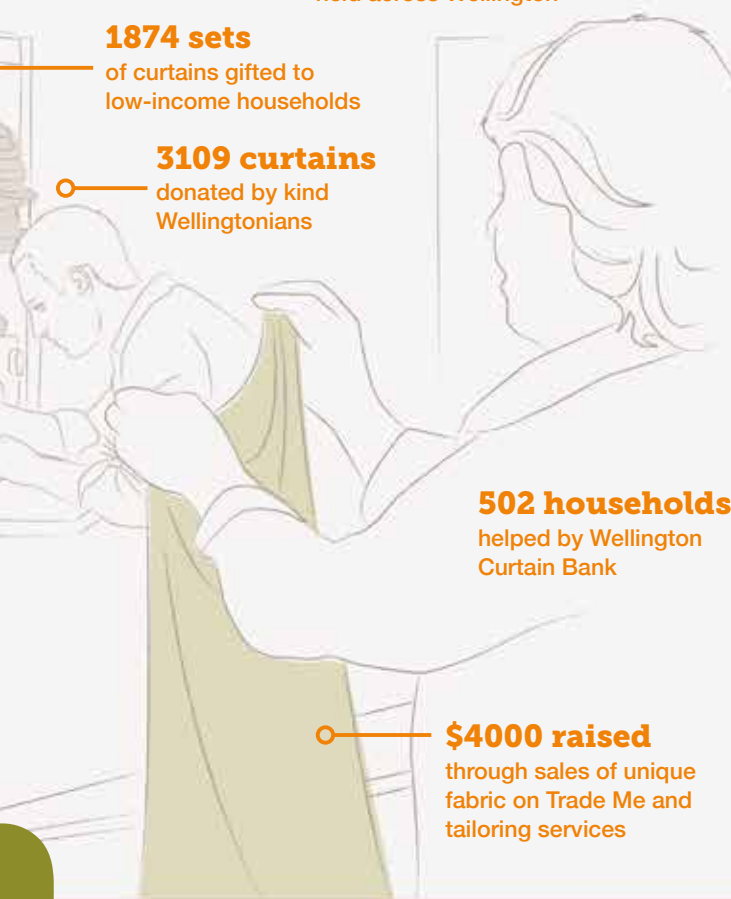
5 mobile curtain banks held across Wellington

1874 sets of curtains gifted to low-income households

3109 curtains donated by kind Wellingtonians

502 households helped by Wellington Curtain Bank

\$4000 raised through sales of unique fabric on Trade Me and tailoring services



Warm Fuzzies

190 homes assessed by the team

7/10 of families completed our recommended actions



65% of families reported improved health



Well Homes

108 homes assessed by the team

133 heaters needed for their homes

141 beds or bedding needed for families

39 homes needed insulation



The work you do has made a huge difference to these families living in cold, damp homes.
– Nina, Wesley Community Action

44 sustainability workshops for schools, community and business

10 compost builds

1922 people took part in our EcoEducation programmes

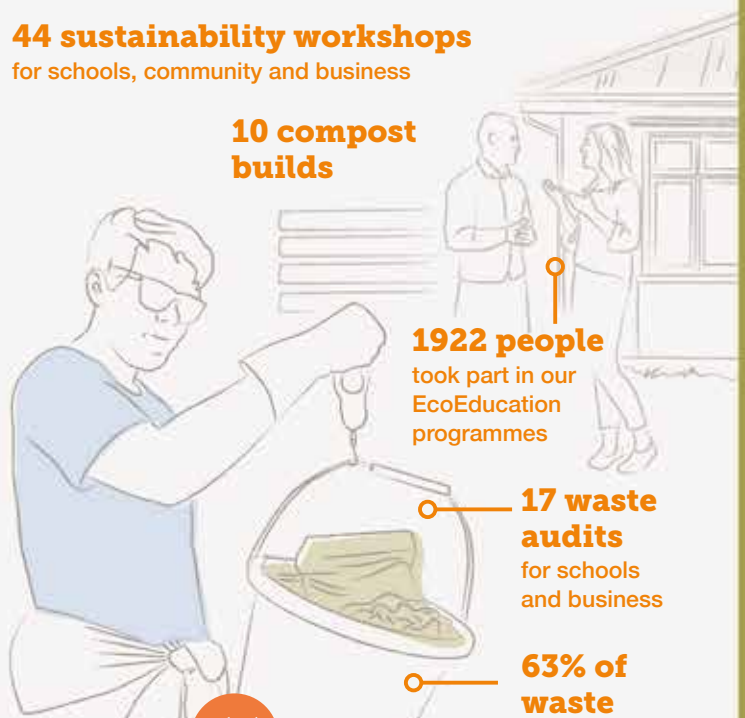
17 waste audits for schools and business

63% of waste audited could have been composted, recycled or repurposed rather than going to landfill



This [waste audit report] is awesome. I’m so excited to share this with everyone. It’s so clear and informative – wow.

– Lydia, Wellington Chocolate Factory



Education



Absolutely Positively
Wellington City Council
Me Heke Ki Pōneke



Ministry for the
Environment
Manatū Mo Te Taiao



NIKAU FOUNDATION



Wellington
Community Trust



Capital & Coast
District Health Board
ŌPŌKO KI TE URU HAUORA



Thank you!

None of this would have been possible without the energy and expertise of these people.

Board: Chris Howe (Chair), Armadeep Sandhu (Treasurer), Josie Adlam, Leigh MacDonald, Mat Walton, Sea Rotmann

Valued staff, past and present: Anthony Taylor-Edwards, Brendan Quinn, Callum Brennan, Chris Mischeski, Christina Bellis, Colin McCall, Craig Auty, David Pierce, Deepa-Rose Sealy, Derek Adaway, Florence McNeill, Gay Elliott, Gollett Daneil, Greg Street, Hilleke Townsend, Janet Young, Jennifer Elliott, Joanne Bulmer, Jonny Parker, Josh Wright, Kere Solomon, Kyle Kraus, Laurie Foon, Lee Barry, Lianne Earles, Linda Beatson, Linda Downes, Lynley Wilson, Megan Hubscher, Megan Ramji, Michael Hackett, Michael Morgan, Michelle Whale, Miranda Struthers, Nathan Ropata, Paul Ripley, Philip Squire, Rena Kohere, Renee Rushton, Shane Owen, Shelali Shetty, Steve Setu, Tessa Johnstone, Thom Adams, Tobias Raka, Tom Chea, Troy Rossi, Van Dy Kim, Vishal Gurudutt

Tireless volunteers: Ania Upstill, Anke Kohle, Anniki Kalo, ANZ staff, Ayesha Burnett, Belen Iturralde, Bev Blake, Carolyn Rehm, Cathy Trewby, Chantal Mawer, Deepa-Rose Sealy, Emma Wadsworth, Faye Tohbyn, Harriet Lowe, Helen Hindmarsh, Hugh Fergusson, Imogen Zino, James Duncan, Jane Kitchenman, Jessie Zhou, Julie Clifton, Ken Munro, Leigh Johnson, Linda Beatson, Lynne Pomare, Marion Lienert, Matahana Calman, Matt Squire, Maxime Besnard, Meg Thorsen, Michelle Cooper, Nathalie Jonquet, Ngaio Double, Niko Dellios, Niky Harris, Nina Fischer, Ruth Nichol, Stella Carruthers, Surekha Dayal

Generous businesses and partners: Citizens Advice Bureau, Dartworks, Energise Otaki, Five&Dime, Great Start Taita, Porirua Whanau Centre, Kapiti Coast District Council, Karma Kola, Lewis's, Miranda Lees Design, NZ Institute of Fashion Technology, Organic Wealth, Optimum Results, Peoples Coffee, Regional Public Health, Stokes Valley Community House, Tony Wills, The Powder Room, Tu Kotahi Māori Asthma Trust, Wainuiomata Community Centre